

**INDAG-intensive inline mixer
Type DLM/P
Hygienic execution HY
For food industry**



INDAG
Maschinenbau GmbH

The FlowMix®-Company

Dynamic mixers
for the continuous mixing of liquids

A promotional graphic for INDAG Maschinenbau GmbH. It features the company logo at the top right, which includes the name 'INDAG' in a large, bold, blue font and 'Maschinenbau GmbH' in a smaller font below it. Underneath the logo is the tagline 'The FlowMix®-Company' in a blue, italicized font. The central part of the graphic is a collage of various food and beverage products, including a carton of milk, a glass of orange juice, a bottle of beer, a container of yogurt, and several bars of chocolate. In the bottom right corner of the graphic, there is a small inset image showing a close-up of the internal mixing chamber of the INDAG-intensive inline mixer, similar to the one shown in the main image on the left. Below the inset image, the text 'Dynamic mixers for the continuous mixing of liquids' is written in a white, italicized font.

Applications for INDAG-DLM/P mixer

- Bakery (sponge cake, waffle, dough, ...)
- Sweets (chocolate, candy mass, snacks, caramel cream, aroma, color, ...)



Advantages of INDAG DLM/P mixer

Round pins mixing elements for intensive but gentil mixing with low shear force

Mixer-housing

The mixer is of high stability.

The static o-rings are squeezed in way that there is no gap between o-ring and metal surface.

The mixer can be positioned horizontal or vertical. The surface in contact with product is electro polished.

Mixer-Rotor

The rotor is hold by a single side bearing outside of product room.

Rotor can be dismantled easily.

Mixing elements of round pin mixing elements design.

Product viscosity up to 1.000.000 mPas

Seal

Single- and double acting mechanical seal is in cartridge execution. The seal is pressure-reversible.

CIP/ SIP cleaning

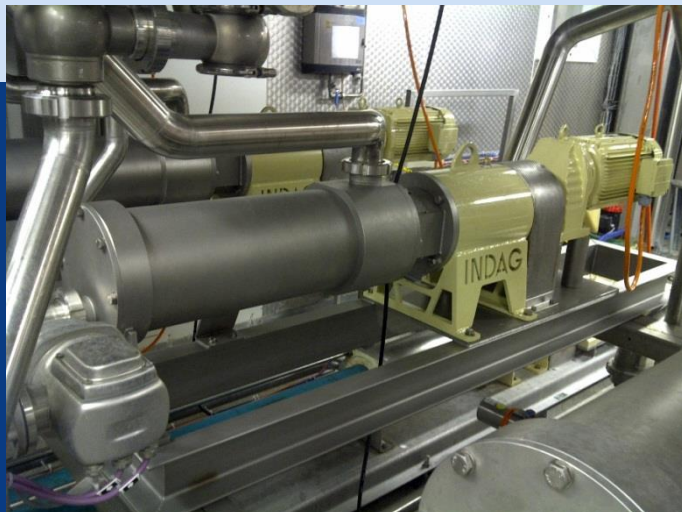
All INDAG-mixers are CIP/ SIP cleanable. All materials including elastomers (o-ring) with stand CIP/ SIP fluids like acids solutions and caustic lye.



Round pin shape
mixer design.
Hygienic design

Technical data

- INDAG DLM/P mixers are available in different diameters and length
- Effective mixing volume from 50ml to 100 Liter
- Pressure rating from 6 bar to 40 bar
- Temperatures up to 220°C
- With double jacket for heating and cooling
- Rotor for heating and cooling
- With additional injection inlets
- capacities form 5 l/hr to 60 000 l/hr
- rotational speeds from 50 rpm to 1 150 rpm
- connections from DIN 11851, Tri-Clamp, SMS, others possible



DLM/P-330
Diameter size
3 and
30 mixing
stages

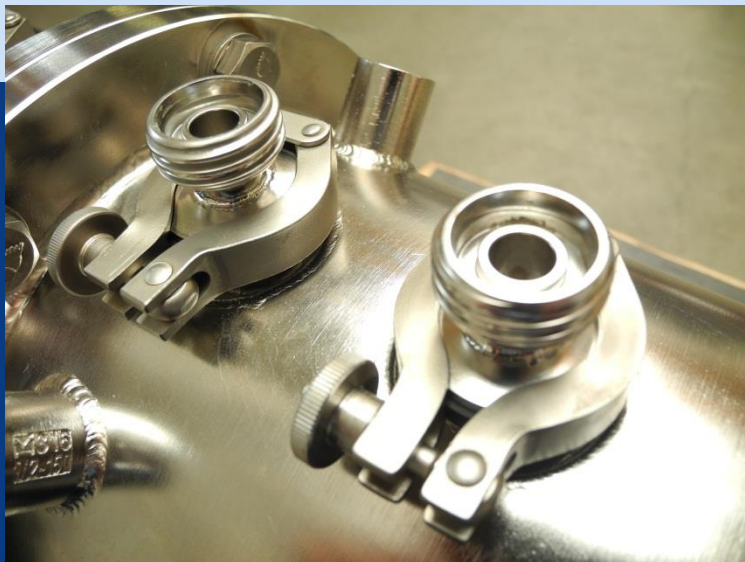
DLM/P mixer



Options for INDAG-Inline Mixer type DLM/P

- Motor housing
- Different positions for inlets and outlet
- Single or double acting mechanical seal or stuffing box seal
- Wide range of material options

DLM/P mixer in block execution
Mounted directly to motor



Injection connections for injection of additives or temperature sensors



Technical data of INDAG Mixer type DLM/P

| Type | | DLM/P-004 | DLM/P-108 | DLM/P-208 | DLM/P-320 | DLM/P-330 | DLM/P-430 | DLM/P-540 |
|----------------|------|-----------|--------------|--------------|--------------|-----------------|-----------------|-----------------|
| Max. capacity* | l/h | 20 to 200 | 100 to 1 000 | 250 to 2 500 | 500 to 7 500 | 1 000 to 15 000 | 1 500 to 30 000 | 3 000 to 60 000 |
| Connections | DN | 25 | 40 | 50 | 65 | 65 | 80 | 100 |
| Connections | inch | 1" | 1 ½" | 2" | 2 ½" | 2 ½" | 3" | 4" |
| Power** | kW | 0,75 | 1,5 | 3 | 7,5 | 11 | 22 | 45 |

*capacity depends on product

**power depends on product viscosity



INDAG-DLM/P-430
mixer with double side
bearings

Technical details

Capacities

10 liter/hr to 60.000 liter/hr
3 gallon/hr to 15.000 gallon/hr
Higher capacities on inquiry

Pressure levels

Up to 40 bar = 362 PSI
Higher pressure rating on inquiry
In accordance with directives on pressure vessels

Positioning

Horizontal or vertical positioning possible.

Connecting point positions

Standard position:
Inlet axial on face side; Outlet radial in 12 o'clock on drive side

Cleaning

Hygienic version HY is especially free of inaccessible areas.

Materials

1,4301 (AISI 304)
1,4404 (AISI 316 L)

Seals

Single-action floating ring seal (mechanical seal)
Double-action floating ring seal (mechanical seal)
Other seals possible

Viscosity

From 1mPas to 2.000.000mPas

Temperature

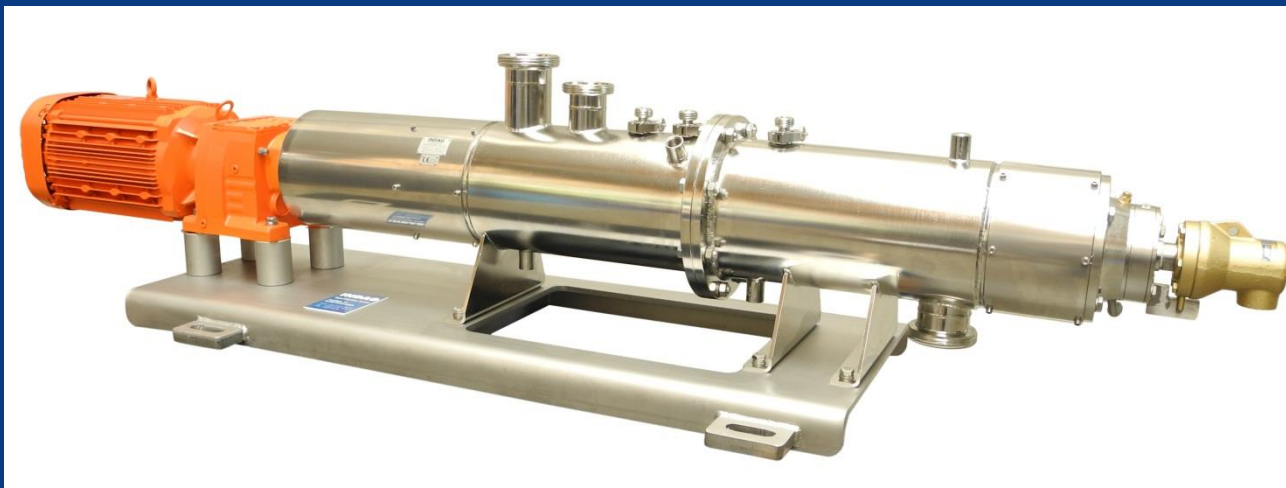
Up to 200 °C
Higher temperatures on inquiry

Connections

Dairy screw thread DIN 11851, DIN 11864, Tri clamp to DIN 11851
SMS, Other connections on inquiry

Drives

Several Voltages, 50 or 60 Hz
IEC, DIN, ISO, VDE, EN
API, AEIC, IES, IEEE, ICEA, NEMA
Explosion proof EEx, ATEX



Contact



Distributore Italiano:

FOIN Impianti Industriali s.r.l.
Zona Ind.le Campolungo (2 Fase)
63100 ASCOLI PICENO
Tel. 0736 814550

info@foin.it

www.foin.it