

**INDAG-intensive inline mixer
Type DLM/S
Hygienic execution HY
For food industry**



INDAG
Maschinenbau GmbH

The FlowMix®-Company

Dynamic mixers
for the continuous mixing of liquids

A promotional graphic for INDAG Maschinenbau GmbH. It features the company logo at the top right, the tagline 'The FlowMix®-Company' below it, and a central collage of various food and beverage products such as milk, juice, beer, and chocolate. A small inset image shows a dynamic mixer. At the bottom, the text 'Dynamic mixers for the continuous mixing of liquids' is displayed.

Applications for INDAG-DLM/S mixer

- Dairy & Beverage Industry (quark, yoghurt, cheese, cream,...)
- Bakery (sponge cake, waffle, dough, ...)
- Sweets (chocolate, candy, snacks, ...)



Advantages of INDAG DLM/S mixer

Mixer-housing

The mixer is of high stability.

The static o-rings are squeezed in way that there is no gap between o-ring and metal surface.

The mixer can be positioned horizontal or vertical. The surface in contact with product is electro polished.

Mixer-Rotor

The rotor is hold by a single side bearing outside of product room.

Rotor can be dismantled easily.

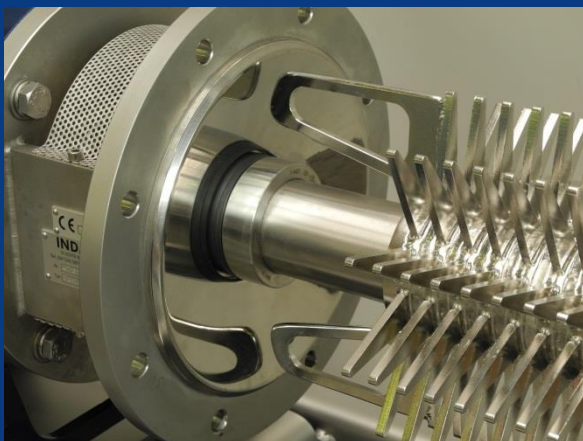
Mixing elements will not break because of trapez shape design. Product viscosity up to 1.000.000 mPas

Seal

Single- and double acting mechanical seal is in cartridge execution. The seal is pressure-reversible.

CIP/ SIP cleaning

All INDAG-mixers are CIP/ SIP cleanable. All materials including elastomers (o-ring) with stand CIP/ SIP fluids like acids solutions and caustic lye.



Hygienic mechanical cartridge seal designed into product room. Fully flushed by product and CIP fluid

Star shape mixer design. Massive and hygienic design



Technical data

- INDAG DLM/S mixers are available in different diameters and length
- Effective mixing volume from 50ml to 100 Liter
- Pressure rating from 6 bar to 40 bar
- With double jacket for heating and cooling
- With additional injection inlets
- capacities form 5 l/hr to 60 000 l/hr
- rotational speeds from 50 rpm to 1 800 rpm
- connections from DIN 11851, Tri-Clamp, SMS, others possible



DLM/S-320
Diameter size 3 and
20 mixing stages

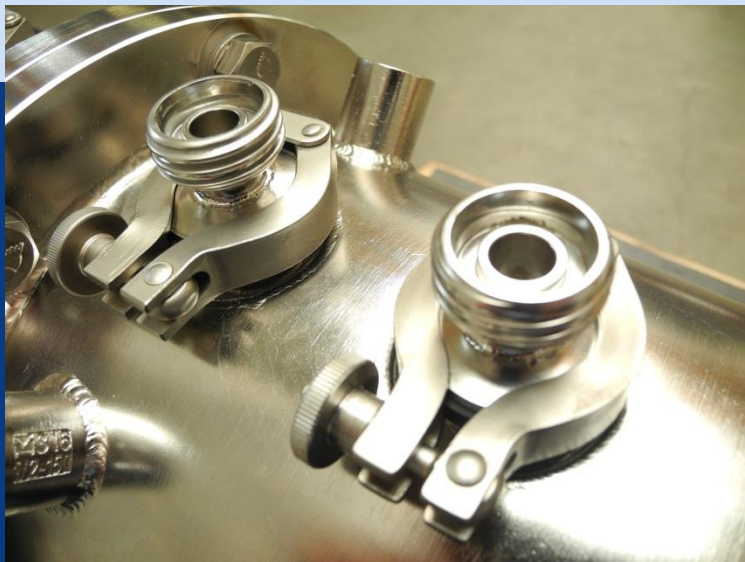
DLM/S mixer
with injection cover for
pressure steam



Options for INDAG-Inline Mixer type DLM/S

- Motor housing
- Different positions for inlets and outlet
- Single or double acting mechanical seal
- Wide range of material options

DLM/S mixer with own bearing block mounted on foundation plate. Motor with housing



Injection connections for injection of additives or temperature sensors

DLM/S-208 with open casing flange



Technical data of INDAG Mixer type DLM/S

Type		DLM/S-005	DLM/S-110	DLM/S-215	DLM/S-320	DLM/S-330	DLM/S-430	DLM/S-540
Max. capacity*	l/h	20 to 200	100 to 1 000	250 to 2 500	500 to 7 500	1 000 to 15 000	1 500 to 30 000	3 000 to 60 000
Connections	DN	25	40	50	65	65	80	100
Connections	inch	1"	1 ½"	2"	2 ½"	2 ½"	3"	4"
Power**	kW	0,75	1,5	3	7,5	11	22	45

*capacity depends on product

**power depends on product viscosity



INDAG-DLM/S mixer
mounted in a mixing
system



Technical details

Capacities

10 liter/hr to 60.000 liter/hr
3 gallon/hr to 15.000 gallon/hr
Higher capacities on inquiry

Pressure levels

Up to 40 bar = 362 PSI
Higher pressure rating on inquiry
In accordance with directives on pressure vessels

Positioning

Horizontal or vertical positioning possible.

Connecting point positions

Standard position:
Inlet axial on face side; Outlet radial in 12 o'clock on drive side

Cleaning

Hygienic version HY is especially free of inaccessible areas.

Materials

1,4301 (AISI 304)
1,4404 (AISI 316 L)

Seals

Single-action floating ring seal (mechanical seal)
Double-action floating ring seal (mechanical seal)
Other seals possible

Viscosity

From 1mPas to 2.000.000mPas

Temperature

Up to 200 °C
Higher temperatures on inquiry

Connections

Dairy screw thread DIN 11851, DIN 11864, Tri clamp to DIN 11851 SMS, Other connections on inquiry

Drives

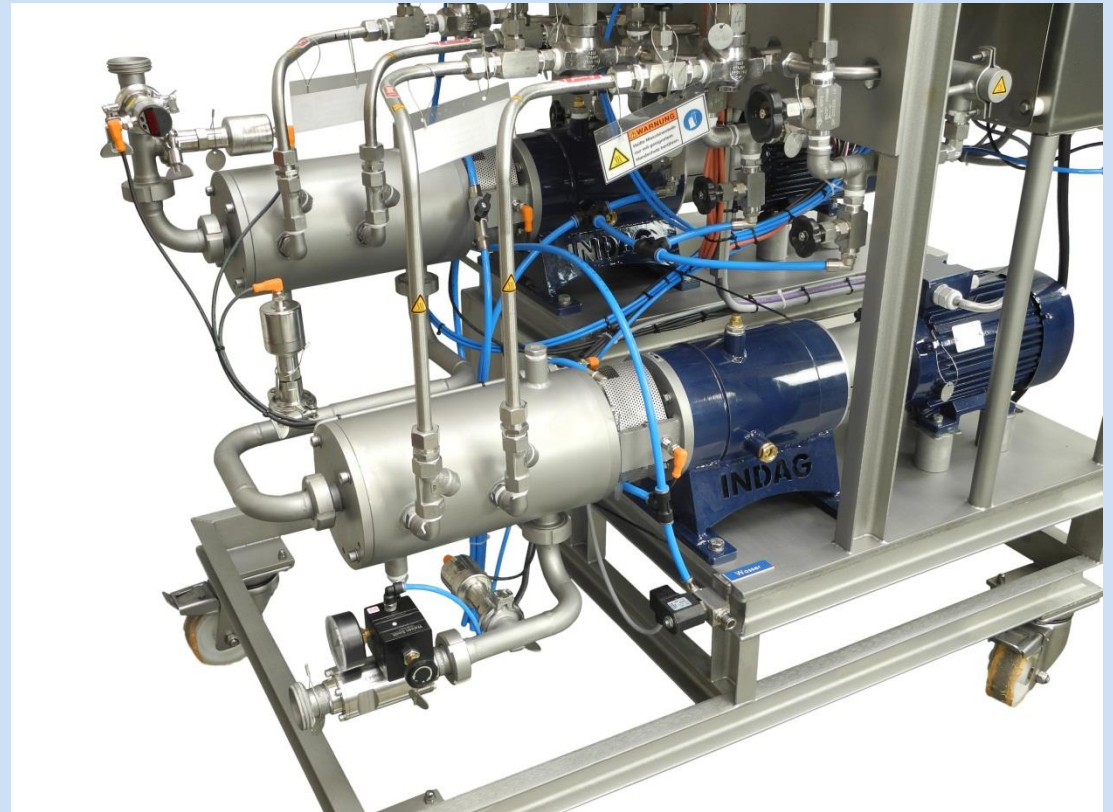
Several Voltages, 50 or 60 Hz
IEC, DIN, ISO, VDE, EN
API, AEIC, IES, IEEE, ICEA, NEMA
Explosion proof EEx, ATEX

INDAG-DLM/S mixer mounted in a mixing system



Contact

INDAG
Maschinenbau GmbH



Distributore Italiano:

FOIN Impianti Industriali s.r.l.
Zona Ind.le Campolungo (2 Fase)
63100 ASCOLI PICENO
Tel. 0736 814550

info@foin.it
www.foin.it